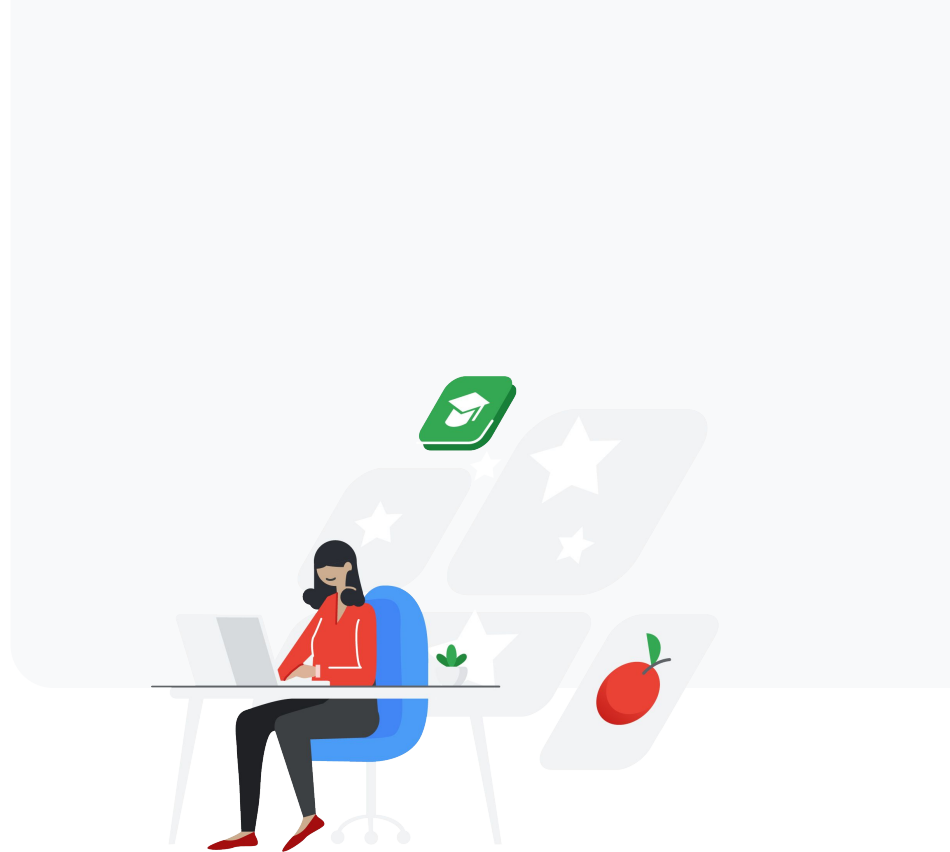


Introducing Assignments



Managing and grading coursework takes up too much time.

- Creating and organizing student work for each course
- Rewriting the same comments over and over again
- Switching between tools to check for plagiarism
- Transferring handwritten grades into an Learning Management System (LMS)
- Managing piles of paper-based coursework

There's a new tool to help with all of that.



Introducing Assignments



Assignments brings the capabilities of Docs, Drive, and Search to a new tool for collecting and grading student work.



Create

Easily create and share coursework with students.



Analyze

Scan student work for originality without leaving your grading interface.



Grade

Save time grading while providing meaningful feedback.



Empower

Provide students with the tools that can help them learn more effectively.

Sign up for beta to get started.



Assignments is now part of G Suite for Education as a stand-alone tool.

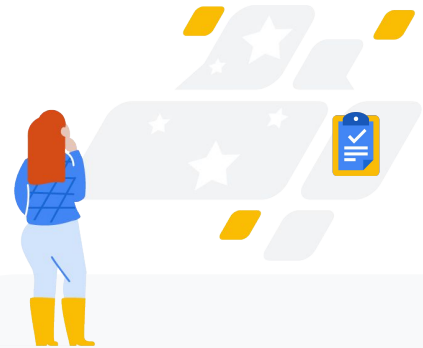
- Share links for student work directly from Assignments or through your LMS
- Coming soon, teachers will be able to export grades to Sheets or a comma-separated values (CSV) file for input into their LMS

Open Assignments at assignments.google.com



Note: Assignments is compatible with any LMS that supports Learning Tools Interoperability (LTI) standards version 1.1 or higher. Talk to your admin about turning on Assignments to create coursework directly within your LMS, automatically sync grades to your LMS gradebook, and more.

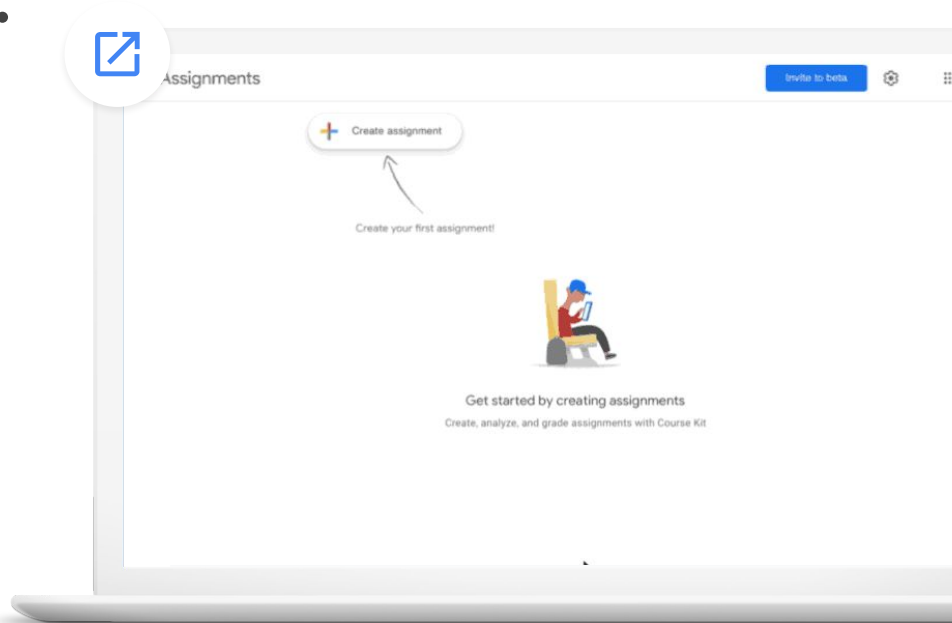
Product tour



Easily create and share coursework with students.

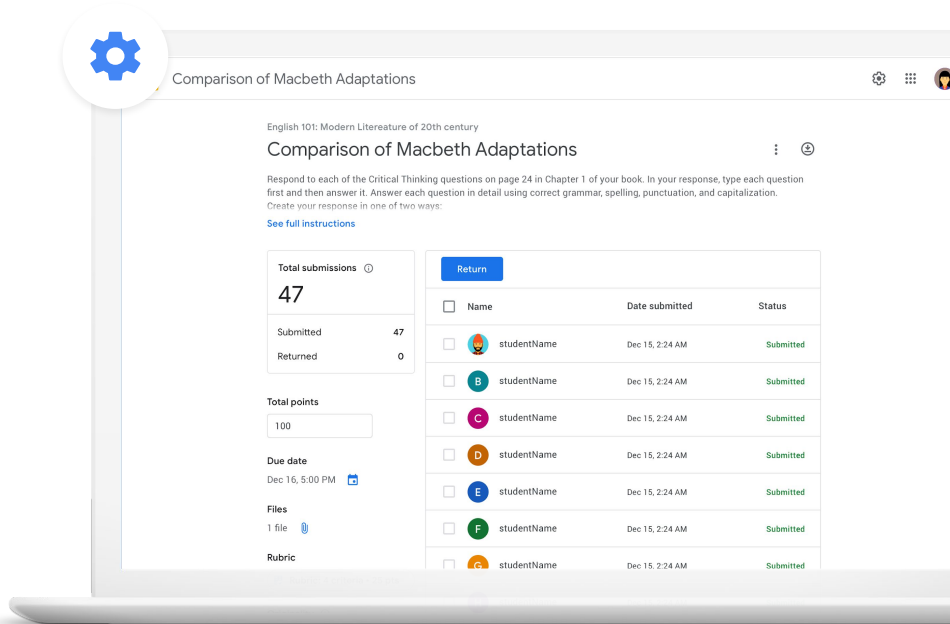
Simplify the process of creating coursework.

- Include attachments in any file format supported by Drive
- Automatically generate a unique assignment file for each student
- Organize coursework by class, date, and student
- Distribute coursework with a single link in your LMS, class website, or email



Control how and when students access coursework.

- Track the date and time of submissions
- Prevent students from editing during grading by using automatically adjusted permissions
- Limit visibility of feedback and grades until after student work is returned
- Return graded coursework individually or all at once



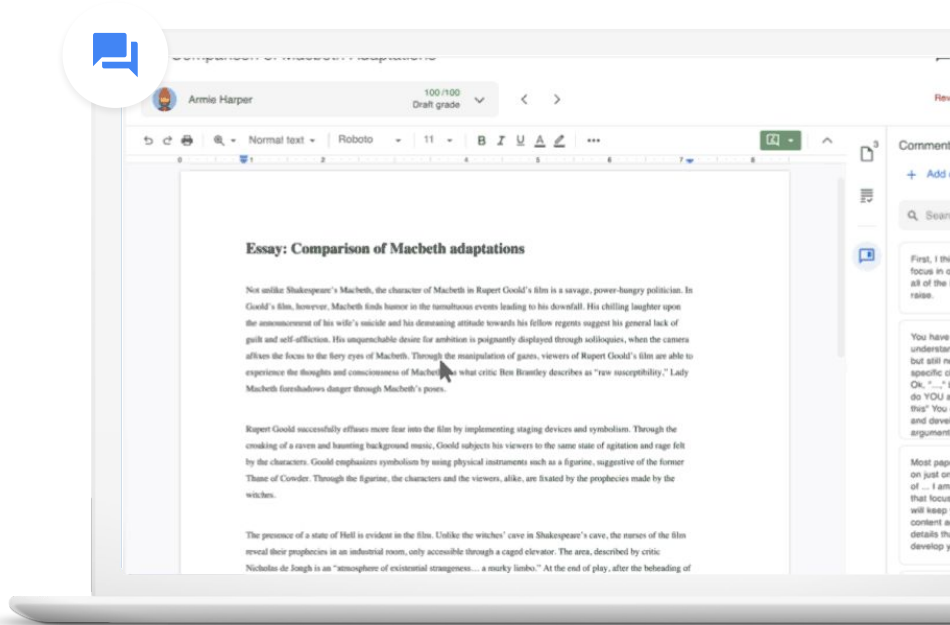
The screenshot shows a Google Classroom assignment interface. At the top, there's a header bar with a gear icon (settings) and the title 'Comparison of Macbeth Adaptations'. Below the header, the assignment details are shown: 'English 101: Modern Literature of 20th century' and the title 'Comparison of Macbeth Adaptations'. The instructions state: 'Respond to each of the Critical Thinking questions on page 24 in Chapter 1 of your book. In your response, type each question first and then answer it. Answer each question in detail using correct grammar, spelling, punctuation, and capitalization. Create your response in one of two ways: See full instructions'. On the left side, there's a summary box showing 'Total submissions' as 47, 'Submitted' as 47, and 'Returned' as 0. Below this, there's a 'Total points' section with a value of 100. The 'Due date' is set for 'Dec 16, 5:00 PM'. Under 'Files', it says '1 file'. Under 'Rubric', it says 'Rubric'. On the right side, there's a table with a 'Return' button at the top. The table has three columns: 'Name', 'Date submitted', and 'Status'. It lists seven students, each with a colored circle icon, the name 'studentName', the date 'Dec 15, 2:24 AM', and the status 'Submitted'.

Name	Date submitted	Status
studentName	Dec 15, 2:24 AM	Submitted
studentName	Dec 15, 2:24 AM	Submitted
studentName	Dec 15, 2:24 AM	Submitted
studentName	Dec 15, 2:24 AM	Submitted
studentName	Dec 15, 2:24 AM	Submitted
studentName	Dec 15, 2:24 AM	Submitted
studentName	Dec 15, 2:24 AM	Submitted

Quickly provide rich feedback.

Save frequently used feedback to a personalized comment bank.

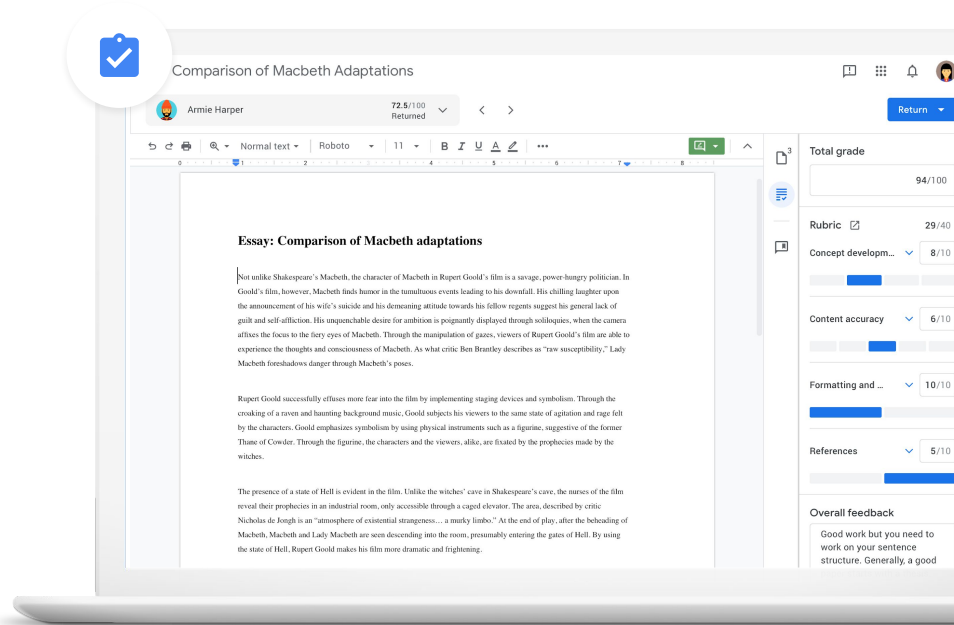
- Type in a single keyword to pull up saved comments from your comment bank
- Minimize the need to write the same feedback for multiple students



Keep grading consistent.

Include custom rubrics to help ensure consistent and transparent grading.

- Grade with a rubric displayed alongside student work
- Help students better understand their final grades
- Make grading uniform and more efficient for instructors

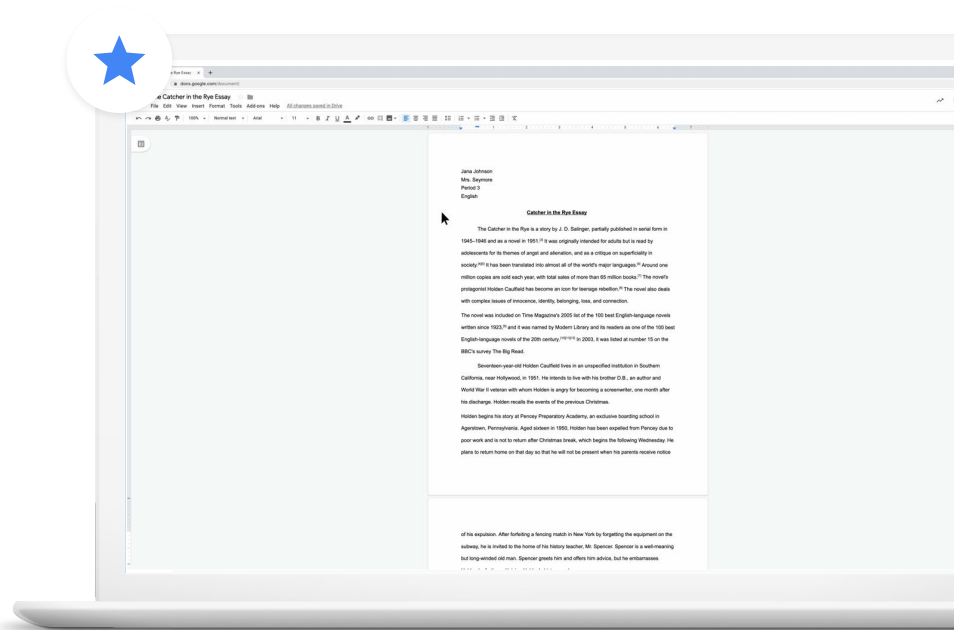


The screenshot displays a Google Classroom assignment titled "Comparison of Macbeth Adaptations" by Armie Harper. The student's score is 72.5/100. The essay, titled "Essay: Comparison of Macbeth adaptations", discusses the character of Macbeth in Rupert Goold's film compared to Shakespeare's play. The right sidebar shows a rubric with three categories: "Concept developm..." (8/10), "Content accuracy" (6/10), and "Formatting and ..." (10/10). The "Total grade" is 94/100. The "Overall feedback" section includes the text: "Good work but you need to work on your sentence structure. Generally, a good".

Help students work more effectively with the power of Docs.

Provide tools that can help them be more efficient and proactively improve their skills.

- Strengthen student writing with grammar suggestions and spellchecking features in Docs
- Help them save time with features like a visible word count
- Enable them to ask questions and further explore their ideas with two-way commenting
- Empower them to check for originality before submitting work to identify where additional citations may be required



Help students turn in their best work.

Originality reports help both educators and students analyze coursework to ensure it's original and properly cited.

- Scan student work for matching phrases across hundreds of billions of web pages and tens of millions of books
- Guide students toward catching common mistakes before submitting their work
- Assess originality without leaving your grading interface



Essay: Comparison of Macbeth adaptations

Not unlike Shakespeare's Macbeth, the character of Macbeth in Rupert Goold's film is a savage, power-hungry politician. In Goold's film, however, Macbeth finds himself in the tumultuous events leading to his downfall. His chilling lament upon the announcement of his wife's suicide and his despondent attitude towards his fellow regents suggest his general lack of guilt and self-affliction. His unquenchable desire for ambition is poignantly displayed through soliloquies, when the camera affixes the focus to the fiery eyes of Macbeth. Through the manipulation of games, viewers of Rupert Goold's film are able to experience the thoughts and consciousness of Macbeth. As what critic Ben Brantley describes as "raw susceptibility," Lady Macbeth foreshadows danger through Macbeth's poses.

Rupert Goold successfully effuses more fear into the film by implementing staging devices and symbolism. Through the croaking of a raven and haunting background music, Goold subjects his viewers to the same state of agitation and rage felt by the characters. Goold emphasizes symbolism by using physical instruments such as a figurine, suggestive of the former Thane of Cawdor. Through the figurine, the characters and the viewers, alike, are fixated by the prophecies made by the witches.

The presence of a state of Hell is evident in the film. Unlike the witches' cave in Shakespeare's play, the nurses of the film reveal their prophecies in an industrial room, only accessible through a caged elevator. The area, described by critic Nicholas Jough is an "atmosphere of existential strangeness... a murky limbo." At the end of play, after the beheading of Macbeth, Macbeth and Lady Macbeth are seen descending into the room, presumably entering the gates of Hell. By using the state of Hell, Rupert Goold makes his film more dramatic and frightening.

The murder scenes of Rupert Goold's film share similar elements of Shakespeare's play; however, Rupert Goold implements more details in the murder scenes. Not unlike Shakespeare's play, there are no visualizations of the murder of the King Duncan of Scotland. The only evidence of the act were the bloody knives and bloody hands of Macbeth used in the execution. Unlike Shakespeare's play, the murder of Banquo occurs in a public setting. By having the execution of Banquo on a train, Goold stresses the power and boldness of Macbeth.

Through his film, Goold introduces an element of absurdity to several scenes. Before the murder of Banquo, Rupert Goold adds a twist of ridiculousness by having Macbeth make a sandwich for the murderers. The scene inflicts more fear upon the viewers of the film by suggesting Macbeth's guiltless demeanor. Through the implementation of absurdity and more

Web matches > sparksnotes.com

STUDENT'S PASSAGE

Many of Shakespeare's plays were published in editions of **varying quality and accuracy in his lifetime**. However, in 1623, two fellow actors and friends of Shakespeare's, John Heminges and Henry Condell, published a more definitive text

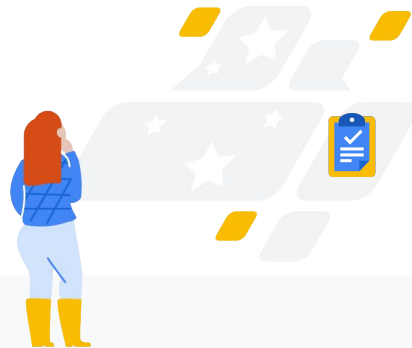
Comment

TOP MATCH

Of his favorite plays there is inconsistency, illustrating **varying quality and accuracy in his lifetime**. However, in 1623, two fellow actors and friends of Shakespeare's, developed a new way to translate and preserve the content language

SparksNotes - Macbeth Act III: The return of Macb
<http://sparksnotes.com/macbethingstoreadthataveeryimportant>

Originality reports in detail



Turn plagiarism detection into a learning tool.

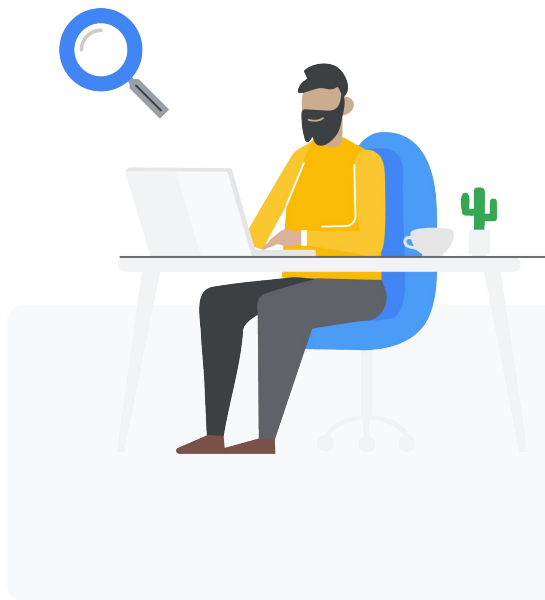
Students need guidance to learn how to navigate the vast amounts of information found online, think critically, and differentiate their ideas.

Most plagiarism detection tools:

- **Seek to catch students cheating**, rather than help them incorporate ideas transparently
- **Deliver poor matches and false positives**, taking up more instructor time
- **Aren't integrated with a grading interface**, creating a clunky experience
- **Ignore privacy and security**, retaining student work in perpetuity for their own profit
- **Are an additional cost**, stretching already tight budgets

We built a tool that can help students learn, while also saving teachers' time when validating academic integrity.

Google for Education



Provide guidance to improve work rather than punish mishaps.

Originality reports focus on helping students learn how to properly incorporate and cite outside ideas and sources, while providing instructors with a way to quickly verify academic integrity.



When **assigning work**, instructors have the option to enable originality reports.

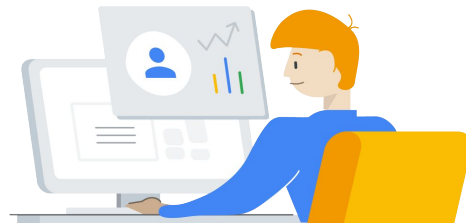


Students can run **up to three originality reports** on documents they attach to coursework before submitting it for grading.



After submission, a fresh originality report will automatically be available to instructors when grading the student work.

Access unlimited originality reports for free during beta.



During the beta trial, users will receive unlimited access to originality reports.

Once it becomes **generally available**, G Suite for Education users can access originality reports for **up to three projects per course**.

Institutions can **upgrade** instructors to G Suite Enterprise for Education licenses to give them **unlimited access to originality reports**.

Assignments supports rigorous standards for accessibility, security, and compliance.

- ✓ Built to Google high accessibility standards
- ✓ Family Educational Rights and Privacy Act (FERPA)
- ✓ Children's Online Privacy Protection Act of 1998 (COPPA)
- ✓ ISO/IEC 27018:2014 (Data standards)
- ✓ Student Privacy Pledge introduced by the Future of Privacy Forum (FPF) and The Software & Information Industry Association (SIIA)

For more details, visit the [Privacy & Security Center](#) and the intellectual property rights in Google [contracts](#).

Get started.



Add Assignments to your G Suite for Education toolkit today. It's free of charge – all you have to do is sign up.



Join the beta at
assignments.google.com