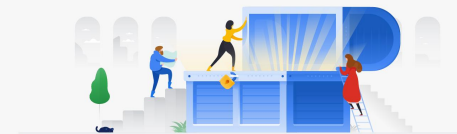


---

## Quick Reference Guide

# Logging in to the Partner Advantage portal

This overview of Google Cloud Partner Advantage is for informational purposes and does not amend or supplement any written agreements between you and Google. If you have questions about Google Cloud Partner Advantage terms, please contact Partner Advantage Concierge team ([Americas](#), [EMEA](#), [JAPAC](#)) for assistance or go to [cloud.google.com/partners/become-a-partner](https://cloud.google.com/partners/become-a-partner). Google Cloud Partner Advantage benefits are subject to change.



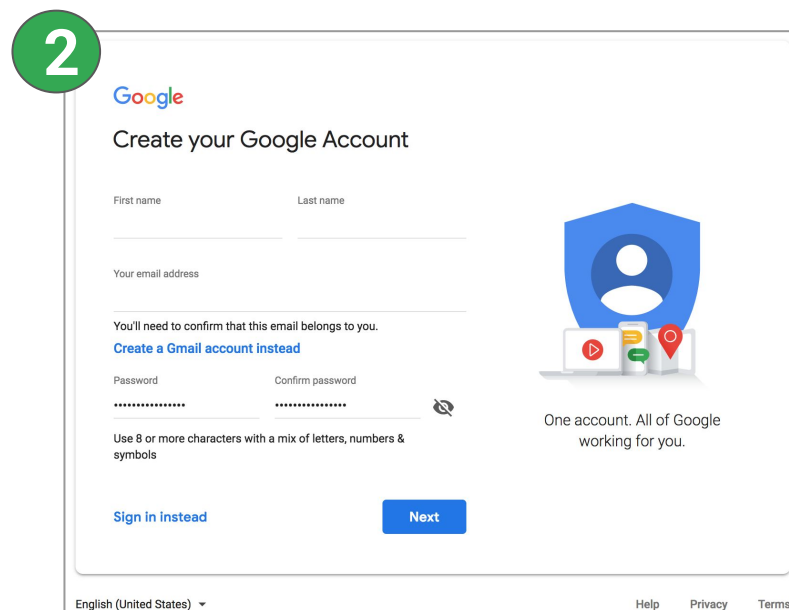
# Setting up a new member account

## Logging in to the Partner Advantage portal for the first time

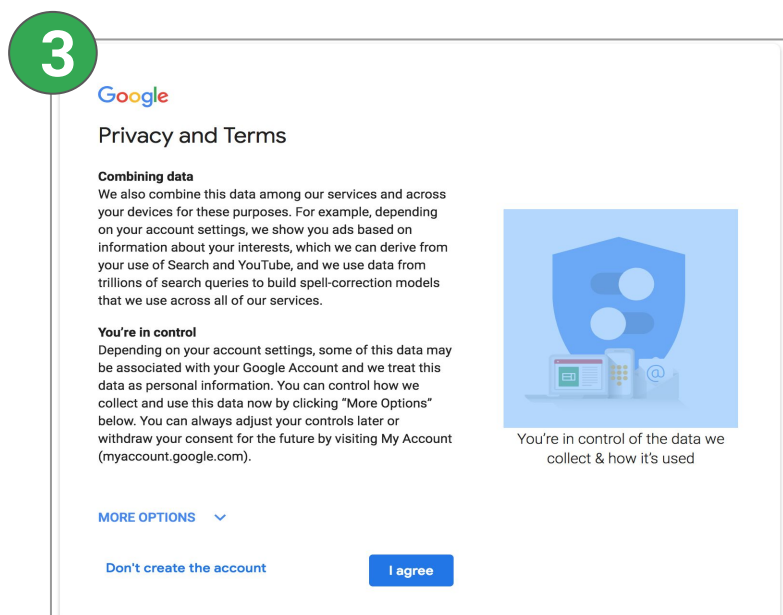
Setting up a Google account allows you to login to the Partner Advantage portal and gives you access to all Google systems without the need to login repeatedly. To create a Google account:



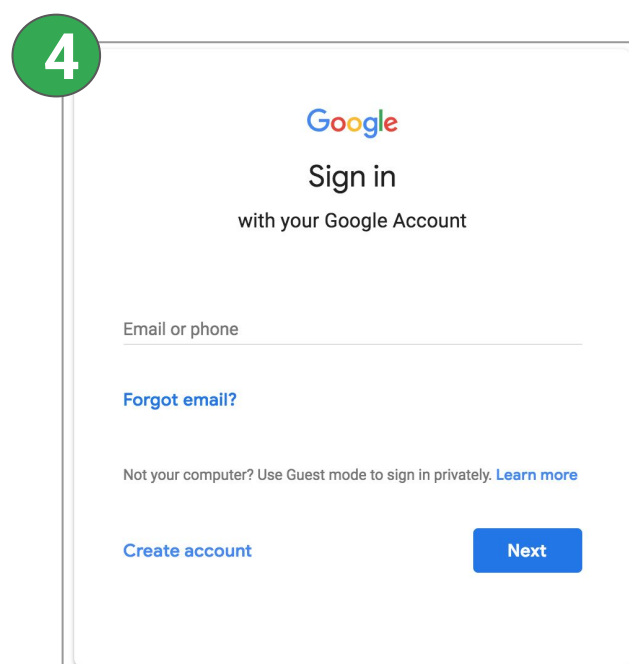
**Open**  
welcome email and  
click link



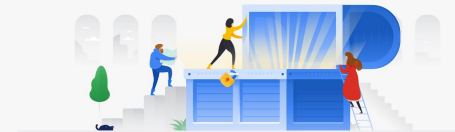
**Create** a Google account with  
the corporate email you used  
to enroll for the program



**Agree** to Privacy  
and Terms



**Sign In** and access  
Partner Advantage



# Setting up a new member account

Logging in to the Partner Advantage portal for the first time cont.

If you already have a Google account associated with your corporate email address, or your corporate account was previously provisioned, you can proceed to Step 2: Sign in instead



**Open**  
welcome email and  
click link

Google  
Create your Google Account

First name Last name

Your email address

You'll need to confirm that this email belongs to you.  
[Create a Gmail account instead](#)

Password Confirm password

Use 8 or more characters with a mix of letters, numbers & symbols

One account. All of Google working for you.

[Sign in instead](#) [Next](#)

English (United States) Help Privacy Terms

**Click** "Sign in Instead"  
to be redirected

Google  
Sign in  
with your Google Account

Email or phone

[Forgot email?](#)

Not your computer? Use Guest mode to sign in privately. [Learn more](#)

[Create account](#) [Next](#)

**Sign In** and access  
Partner Advantage

**NOTE:** If you don't remember your password, click "Forgot password?" to reset it.