



# Nest Learning Thermostat (4th gen) Configuration Guide

## How to use:

To adjust the forms, you must utilize Adobe Acrobat or a PDF editor that supports forms.

This document is designed as a tool for you to pre-configure how to set up the thermostat with the system for each job.

You will find a section for: Configuration, Advanced Settings, Equipment Specific Settings, and Intelligent Features. In addition, there is a note section for any insights you would like to provide the installer.

In each “box” the options available for you are listed. Simply click the drop down and select (Fig 1). For options that have a manual input or range, the range and defaults are listed. Select the box and type the choices available (Fig 2).

Terminal	Function	Source	Delivery
Y1	N/A	N/A	N/A
Y2	N/A	N/A	N/A
W1	N/A Stage 2 Compressor 2nd Speed Fan	N/A	N/A
W2	HP Stage 2 - Heat/Cool HP Stage 2 - Heat HP Stage 2 - Cool	N/A	N/A
G	N/A		
C	N/A		
O/B	N/A		
*	N/A	N/A	N/A

Fig 1

N/A	Minimum heat on time	3 min (default)
N/A	Heat temp difference	Auto (default)
	Cool temp difference	Auto (default)
N/A	Overcooling limit	3° (default)
	Humidity Threshold	70% (default)
N/A	Minimum indoor temp	68°F-85°F (80°F default)

Fig 2

## Finalizing in Adobe Acrobat:

Once complete, in Adobe Acrobat:

- Select File or Menu
- Select Print
- Select your printer or Adobe PDF (to create an emailable file)

A print or file will be created for you without the dropdowns, but showing the options you have selected.

Configuration					Advanced Settings	
Terminal	Function	Source	Delivery	Fan		
Y1	N/A	N/A	N/A		Compressor Lockout	3.5 min (default)
Y2	N/A	N/A	N/A		Min Compressor On Time	3 min (default)
W1	N/A	N/A	N/A	N/A	Minimum heat on time	3 min (default)
W2	N/A	N/A	N/A	N/A	Heat temp difference	Auto (default)
G	N/A				Cool temp difference	Auto (default)
C	N/A				Overcooling limit	3° (default)
O/B	N/A				Humidity Threshold	70% (default)
*	N/A	Geothermal	N/A	N/A	Minimum indoor temp	68°F-85°F (80°F default)
RC	N/A					
RH	N/A					
AQ+	N/A			N/A		
AQ-	N/A					



# Nest Learning Thermostat (4th gen) Configuration Guide

## Configuration

Terminal	Function	Source	Delivery	Fan
Y1				
Y2				
W1				
W2				
G				
C				
O/B				
*				
RC				
RH				
AQ+				
AQ-				

## Advanced Settings

Compressor Lockout	
Min Compressor On Time	
Minimum Heat On Time	
Heat Temp Difference	
Cool Temp Difference	
Overcooling Limit	
Humidity Threshold	
Minimum Indoor Temp (80°F default)	

## Equipment Specific Settings

Fan	Activation:				
Humidifier	Integration:	Fan Activation:			
Dehumidifier	Integration:	Relay Orientation:	Fan Activation:		
Heat Pump	O or B Wire:	Heat Pump Balance:	Reverse Valve Activation:	Compressor Lockout*:	
Auxiliary Heat	Aux Lockout (40°F default):	Aux Upstage Timer:	Droop:	Aux Min Delay:	
Alternate Heat	Breakpoint (30°F default):	Alt Heat Changeover Timer:			
Ventilation	Smart Ventilation:	Req. Daily Ventilation:	System Type:	Fan Activation:	Prioritize Efficient Times:

\*Only available after end user configuration

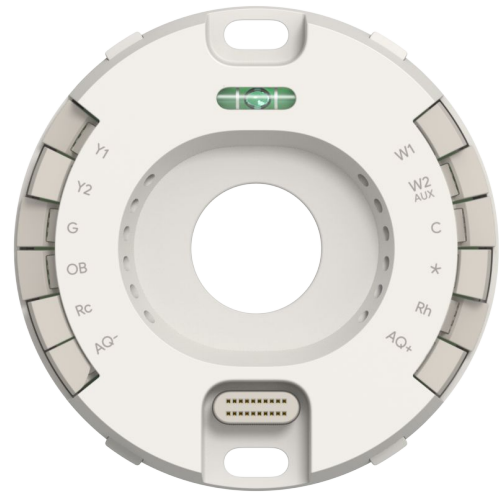


# Recommended Intelligent Feature Settings

These features are configured by the end user. Some will be set up during the provisioning process. To get to these settings after provisioning they will go to:

Settings → temperature preferences → then choose the relevant feature.

Smart Schedule	Mode:		
Adaptive Comfort	On/Off:		
Adaptive Eco	On/Off:		
Early On	For Heating:	For Cooling:	While Away:
Airwave	On/Off:		
Humidity Helper	Cool to Dry:	Smart Humidity:	
Seasonal Savings	Notifications:		
Natural Heating and Cooling	On/Off:	Window Reminders:	
Sunblock	On/Off:		
True Radiant	On/Off:		



## End User Provisioning Help

If the end user needs any assistance setting up their new thermostat or have any questions about their thermostat, they can visit [g.co/nest/ProInstalled](https://g.co/nest/ProInstalled) or scan the QR code to the left.

## Additional Notes

---



---



---



---



---