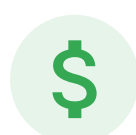
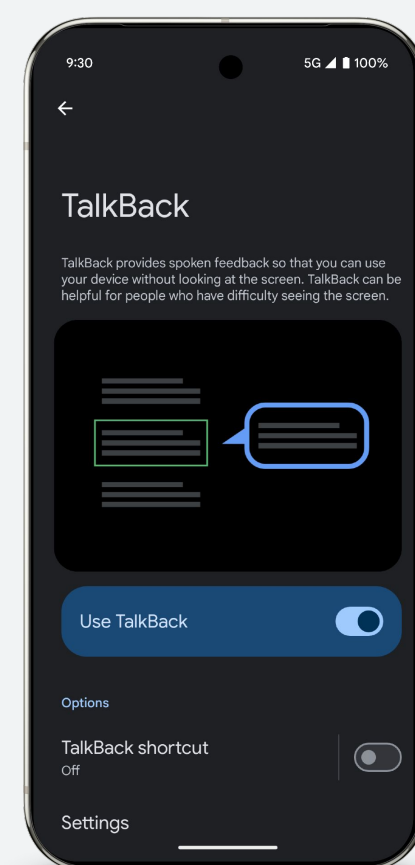


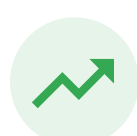


Support every accessibility need with Android Enterprise

Built in accessibility features on Android devices for work



The Global Assistive Technology Market size is expected to be worth around **USD 36.6 Billion by 2033.**



Companies that have led on key disability inclusion criteria saw **2 times more economic profit** than other companies.



For **82% of employees with disabilities**, software plays a crucial role in their ability to carry out their work.

Android provides a strong foundation for building a more accessible and inclusive work environment. Its built-in accessibility features, like TalkBack and Switch Access, help employees with disabilities navigate their devices and applications effectively and independently. The accessibility technology built into Android devices helps teams and organizations to:

- **Adapt work to their teams with ease** using Android's vision features.
- **Amplify what matters at work** with Android's hearing tools.
- **Unlock personalized control** for employees with motor limitations.

Vision

Android provides visual aid features like magnification, color adjustments, and screen readers to cater to the needs of employees with blindness, low vision, or partial vision, ensuring a comfortable and efficient user experience for everyone.



Connect compatible braille displays with Android Braille Display support¹

Support employees who require tactile interfaces by offering seamless compatibility with braille displays.



Tailor the mobile device display with Android's display customization

Accommodate diverse visual needs by providing employees with personalized visual experiences through adjustable font sizes, color correction, and high contrast modes.



Use Android as a powerful AI-powered visual assistant at work with Lookout²

Enhance access to visual information with AI to provide on-demand descriptions of images, documents, and surroundings.

Hearing

Use Android's real-time captions, sound amplification, and noise filtering to help improve employee experiences for team members who are deaf, hard of hearing, or who have speech disabilities.



Promote personalized communication with RTT³ (Real-time text)

Boost inclusive communication by enabling text-based conversations in real-time, without the need to hit send.



Leverage Live Transcribe for easier participation in workplace conversations

Improve meeting accessibility with real-time transcriptions of conversations to facilitate comprehension in noisy environments.



Enhance important sounds in the work environment with Sound Amplifier⁴

Facilitate clearer audio experiences for employees with hearing loss by filtering background noise and amplifying important sounds, both in-person and online.

Mobility

Provide controls to employees with motor limitations so they can personalize their workday and streamline their workflows with voice commands, adaptable shortcuts, and switch controls.



Empower employees to own their workday with Gesture Navigation⁵

Offer employees greater flexibility and control over their device by enabling intuitive navigation through swipes and gestures to improve efficiency.



Help team members customize how they control their devices with Switch Access⁶

Ensure device accessibility for employees with diverse motor needs by providing a personalized and adaptable control scheme where teams can interact with their Android devices using external switches, keyboards, and other assistive devices.



One-tap workflows with Action Blocks⁷

Streamline employee workflows by providing the option to create large customizable on-screen buttons to open frequently used work apps, compose emails, or automate tasks with a single tap.

1. BrailleBack is no longer required to connect to a braille display
2. Requires Android version 6.0 or up. [Learn how to check your Android version](#)
3. To find out if you can use RTT with your device and service plan, check with your carrier.
RTT uses call minutes, just like a voice call

4. Headphones required for this feature
5. Some of the set up steps only work on Android 12 and up and/or people touch the screen.
6. Some of the set up steps require people touch the screen.
7. [Check requirements](#) for Action Blocks

