

Interview series

Pathways of collaboration: New medical image storage and sharing capabilities in the cloud vastly increase access to world-class care

[Ambra Health](#) is a medical data and image management cloud software company, committed to the mission of delivering better care through better technology, right at the heart of the care network.

The Google Cloud Healthcare and Life Sciences team spoke with Morris Panner, CEO of Ambra Health, about the new possibilities that secure medical image sharing technologies create for medical professionals and patients.

What are Ambra Health's main solutions in the healthcare space, and how does your partnership with Google Cloud enhance those solutions?

Morris Panner: Ambra Health's main solution is a comprehensive digital imaging platform that allows customers to view, share, store, and manipulate computed tomography (CAT) scans, magnetic resonance imaging (MRI) scans, X-rays, and other forms of diagnostic imaging. Today, these tasks usually happen in an on-site siloed environment. We introduced cloud technology that enables our customers to collaborate across different institutions. Patients can collaborate with doctors, and doctors can collaborate with each other. For example, a surgeon can call a radiologist and ask, "How is this going to work?" as they share a view of the area that's going to require surgery.



Let's get solving.

In partnership, Laos Children's Hospital, Ambra Health, RAD-AID, and Google Cloud are solving...

"...for real-time access to precious medical imaging and diagnostics for the benefit of children."

Morris Panner,
CEO,
Ambra Health

Google Cloud and Ambra are natural partners in this space. Google Cloud provides storage capability for massive amounts of data that need to be available at different rates to different levels of compute power. And the output for complex medical images, such as CAT or MRI scans, is huge. This requires high availability and highly redundant access around storage—one of the great aspects of Google Cloud's horizontal functionality.

[One very successful and meaningful example of our collaboration involved the Children's Hospital in Laos. Can you share a bit about how this partnership took shape?](#)

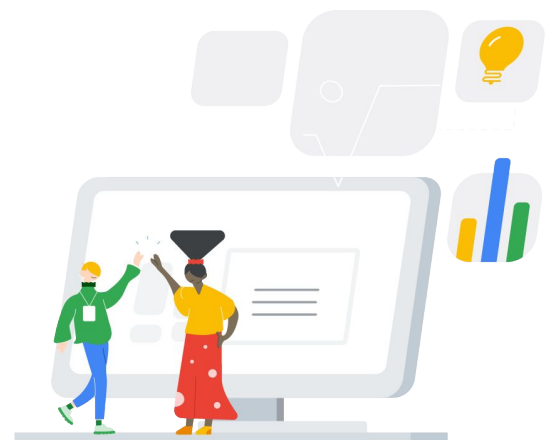
Morris Panner: This was a partnership among RAD-AID—an international group of philanthropic technicians and physicians—Google Cloud, and Ambra to bring about a revolution in care. Kids in Laos were getting sick, and doctors there couldn't figure out what was wrong with them—not because the technology didn't exist, but because they didn't have access to it. So, we collaborated with Google Cloud to spin up a virtual cloud environment, bringing world-class care to kids across Laos. Now, the physicians at Children's Hospital can undertake the most complex diagnostic consultations—and they can do it in real time with experts around the world. This level of care was previously unimaginable.

We're harnessing the power of healthcare in a way that multiplies all of us. We're enabling people to realize the fruits of their ideas by sharing, innovating, and implementing ideas on our platform.



Morris Panner,
CEO, Ambra Health

“We're harnessing the power of healthcare in a way that multiplies all of us. We're enabling people to realize the fruits of their ideas by sharing, innovating, and implementing ideas on our platform.”



The Children's Hospital partnership is an amazing example of "greater than the sum of its parts" synergy. What are some other unique and valuable features of your partnership with Google Cloud in the healthcare space?

Morris Panner: We work with providers who regularly evaluate different solutions in the marketplace. The partnership we've cultivated with the Google Cloud team gives our customers something they wouldn't otherwise be able to access. It helps them get so much more from Google Cloud's fundamental underlying infrastructure and better tailor it to fit their specific business problems.

Google Cloud's reputation precedes it. The technology's durability, combined with the investments Google is making in healthcare, gives people confidence that they can trust their data to the Google Cloud environment. Google is creating highly impactful horizontal tools and providing algorithms designed to de-identify other types of data and bring them into the healthcare space, where patient confidentiality and privacy are really important. We must ensure privacy when storing data or providing access for research on that data. So, our customers need a clinical foundation and a research foundation. Our partnership with Google Cloud animates both.



Morris Panner,
CEO, Ambra Health

"We work with providers who regularly evaluate different solutions in the marketplace. The partnership we've cultivated with the Google Cloud team gives our customers something they wouldn't otherwise be able to access. It helps them get so much more from Google Cloud's fundamental underlying infrastructure and better tailor it to fit their specific business problems."



To learn more about
Google Cloud Healthcare and Life Sciences visit:

<https://cloud.google.com/solutions/healthcare-life-sciences>

To learn more about Ambra Health visit:

<https://www.ambrahealth.com/>