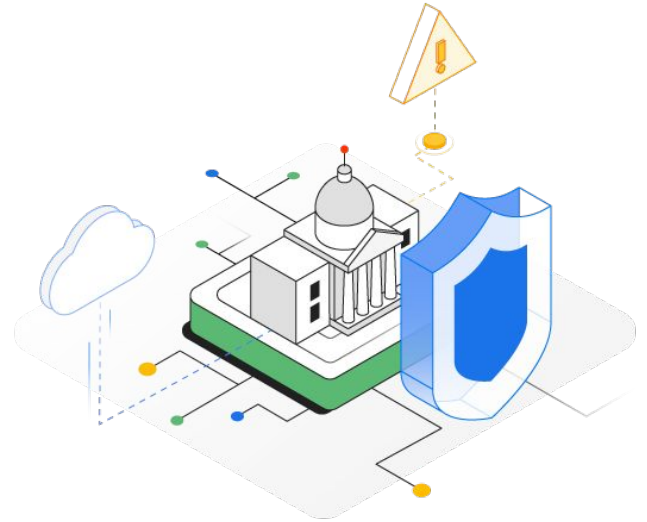


Strengthening Nationwide Cyber Defense



Protect critical national infrastructure by uniting national cyber defense with near real-time knowledge sharing and unparalleled situational awareness of the threat landscape with Chronicle CyberShield.

Raise the bar for cyber defense

Chronicle CyberShield ensures the people, processes and technologies are in place to combat modern threats. CyberShield enables governments to build an enhanced cyber threat capability, protect web-facing infrastructure, and develop skills and processes that drive effective security operations.



Streamline nationwide security operations

Modernize government security operations centers with capabilities to enhance detection, protect against major threats, and automate response and incident management.



Protect web assets and infrastructure

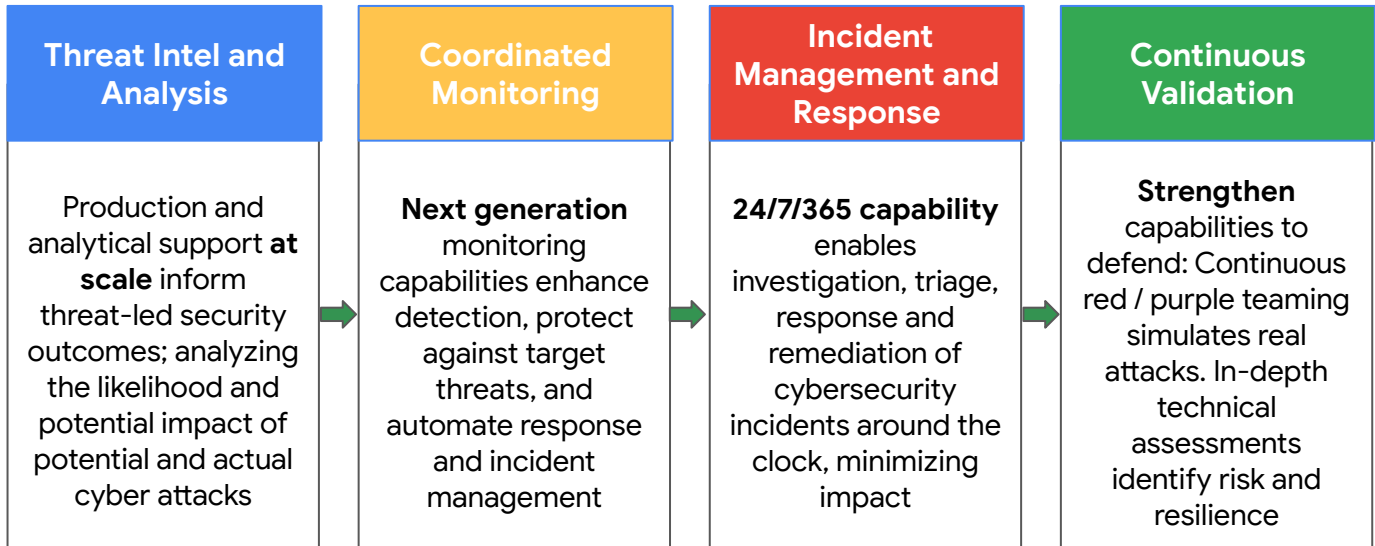
Secure nationwide and entity web assets from large-scale cyber attack with digital security integrated to prevent against new and existing threats like distributed denial of service, bot attacks and defacement.



Develop capability excellence

Develop the governance, process and skills required to build and operate modern security operations delivered through a nationwide cyber security capability.

Key components of Chronicle CyberShield



Defend against tomorrow's attacks today

Chronicle CyberShield presents a comprehensive solution that provides technology, processes, capabilities, and resources required to deliver unparalleled situational awareness of the threat landscape. CyberShield can help improve national security at scale, accelerate innovation, and support continuous cyber defense. With CyberShield you can:

- ✓ Enhance situational threat awareness across the nation
- ✓ Drive effective security operations
- ✓ Reduce the impact and severity of cyber attacks to critical national infrastructure
- ✓ Continuously test threat detection capabilities and build effective response to major incidents
- ✓ Improve security governance
- ✓ Build advanced skills, talent, and capabilities