



Google's US data centers: the Cloud supporting communities & economies

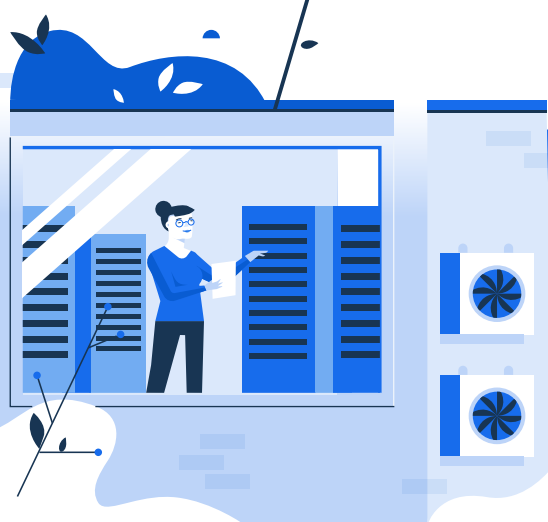
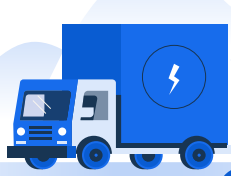


It's all in the Cloud

Checking your Gmail, catching up on the news, checking out videos on YouTube. We don't question or think about the incredible technology that makes this possible every second of every day. And yet, every day, the demand for computing continues to skyrocket, with millions more people coming online every month.

Where do we put it all?

All this data needs to be stored somewhere. Personal storage is one option, but it's much more energy efficient to store information in the Cloud. In fact, if all US businesses shifted to using the Cloud, we could reduce the energy used by information technology by up to 87%. That's enough energy to power the city of Los Angeles for one year.



Constructing more Cloud

To meet the demand of users across the globe, in 2006 we built our first data center in Oregon, and since then we've built and broken ground on multiple data centers across the country.

As of 2018, Google has invested over \$10.5 billion equipping its US data centers to deliver state-of-the-art services.



Playing a role in our local communities

At Google, we care about and support the communities where we work and live. We do this in our data center communities with economic investment and job creation, but also via grant making and supporting local initiatives. We like to think that we help our communities grow and succeed.



100% renewable

At Google, sustainability is part of everything we do. We've been carbon neutral since 2007 and we buy enough renewable energy to account for every unit of electricity the company uses. In fact, we're the largest corporate purchaser of renewable energy worldwide, and our data centers are the most energy efficient.



Quick connections

To access Gmail or YouTube, to stream music or your favorite movies, you need a fast connection, right? So over the past three years, Google has invested over \$30 billion in our infrastructure, adding new undersea cables, more points of presence, and edge locations to grow our network. Because the internet shouldn't be a drag, it should move at a pace that suits your life.



Grants

We support our data center communities with engagement that has value and impact. That's why we have a grants program that supports projects such as teaching coding in local schools. As well as financial assistance, we also support our communities by donating time and expertise. Ultimately, we love being good neighbors.



Jobs and investment

Google's US data centers generate significant income and economic activity for the communities around them and have created over 11,000 jobs as well as \$1.3 billion in economic activity.

