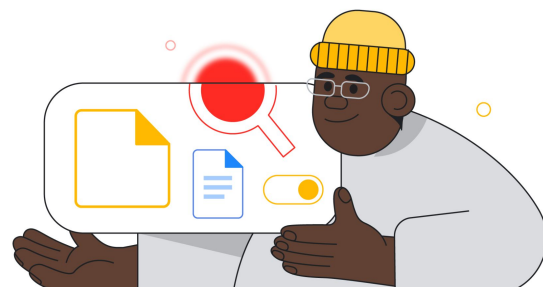


Certified Educator

Level 2 exam guide

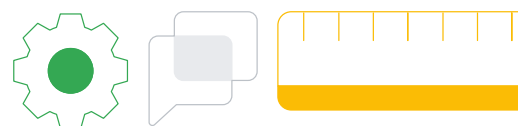
A Google Certified Educator Level 2 can articulate the capabilities of Google tools to **create, communicate, collaborate, and organize** effectively within an educational setting.

This certification is designed for individuals seeking to demonstrate their expertise in Google for Education tools and their ability to integrate digital learning effectively into the classroom.



ISTE Standards

The Google Certified Educator Level 2 exam is aligned to ISTE Standards and supports teaching practices backed by research and learning sciences.



This exam guide outlines the topics that may appear on both the standard and renewal exams.

01

Create

Identify Google tools and create/format within them

02

Communicate

Engage in ongoing communication with stakeholders

03

Collaborate

Help students reflect on their learning and provide feedback

04

Organize

Manage, gather, and analyze for improved workflows

Exam objectives and ISTE standard alignment

Create



Certified educators can streamline teaching and enrich learning with GWfE tools, using them for interactive lessons, personalized learning, student feedback, and flipped/blended instruction.

Exam learning objective

ISTE Standard alignment

1.01 Utilize additional functionality of GWfE to make aspects of teaching duties more efficient

2.5.a Accommodate Learner Differences

1.02 Utilize Google Slides features to enhance classroom experience with interactive lessons

2.6.d Model and Nurture Creativity

1.03 Implement digital tools that can enhance different personalized learning models

1.05 Utilize Google Forms and Classroom to analyze student understanding and provide personalized feedback of assessment of learning

2.7.b Use Tech to Create Assessments

1.06 Utilize Google Workspace for Education tools to flip or blend classroom instruction

Communicate



A certified educator streamlines communication with the school community using GWfE tools for automation and personalized updates.

Exam learning objective

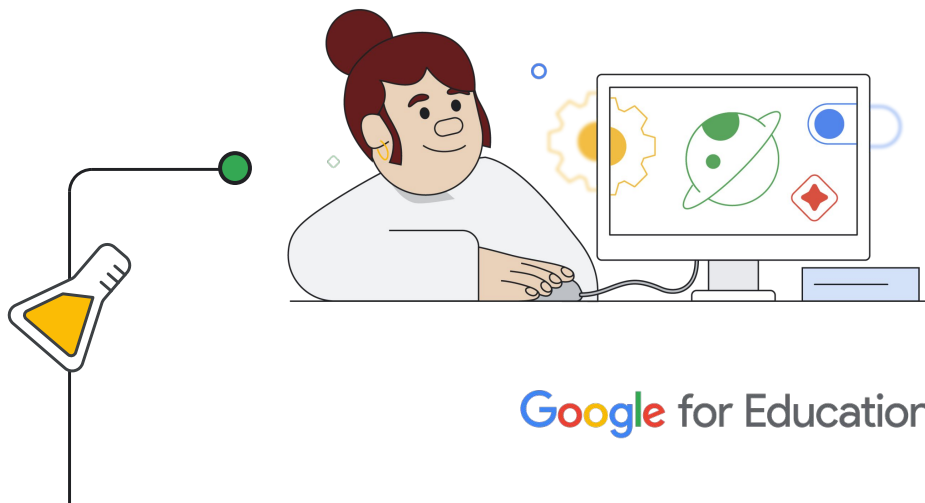
ISTE Standard alignment

2.01 Utilize automation and personalized updates to connect with the school community more effectively

2.7.c Use Data to Guide Progress

2.02 Leverage Google Workspace for Education to efficiently organize and automate communication with school community

2.6.b Foster Classroom Management of Tech



Exam objectives and ISTE standard alignment

Collaborate



A certified educator enhances collaboration and learning by leveraging Google Drive, Docs, and Slides for content and Google Meet for extended opportunities.

Exam learning objective

ISTE Standard alignment

3.01 Utilize Google Drive, Docs, and Slides to create, share, and collaborate with school community

2.4.a Collaborate with Colleagues

3.02 Create opportunities for learning both in the classroom and beyond its walls with Google Meet

2.6.d Model and Nurture Creativity
2.4.c Use Collaborative Tools
2.5.c Innovative, Equitable Learning Environments
2.4.a Collaborate with Colleagues
2.5.c Innovative, Equitable Learning Environments
2.6.b Foster Classroom Management of Tech

Organize



A certified educator utilizes Google tools to efficiently manage the workflow between teachers and students, thereby facilitating time for exploratory learning and differentiation. Furthermore, a certified educator employs Google tools to streamline communication with both the school and home communities.

Exam learning objective

ISTE Standard alignment

4.01 Utilize Google Forms and Sheets to establish and effectively organize communication with school community

2.5.c Innovative, Equitable Learning Environments

4.02 Assess and manage student projects to provide space for students to reflect on their learning beyond the classroom

2.6.d Model and Nurture Creativity

4.03 Use GWfE tools to search, understand, and organize information

4.04 Leverage Google Sheets to visualize student data and differentiate instruction

2.7.c Use Data to Guide Progress



● Getting certified

01

Prepare

Our Basic and Intermediate use of Google Workspace for Education Fundamentals [courses](#) help educators learn skills tested in the exams.

02

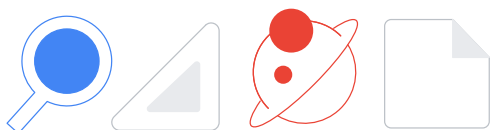
Review

Use the [Level 2 task cards](#) to review the exam checklist and test your skills.

03

Test

Visit the [certification page](#) and click "Register now" to sign up for an exam.



● Join the Educator Community!

The [Google Educator Community](#) is an online community of educators around the world. It is a space for dynamic, creative educators to connect and collaborate with colleagues, learn about the newest Google products, and expand their instructional practices.

