

Google for Education

Google Certified Educator

What to expect on the exams

- 2 - Exam details
- 3 - Labeled diagram
- 4 - Sample test questions



Exam Details

2

exams

Google Certified Educator Level 1 and Level 2

Level 1 - Demonstrate your mastery of Google tools in your classroom with the Educator Level 1 Certification.

Level 2 - Validate your expertise and advanced technology integration skills with the Educator Level 2 Certification.

35

questions

Exam Questions

Testers can expect to see ~35 multiple choice style questions on both the Level 1 and Level 2 exams.

Question types include: multiple choice and drag and drop

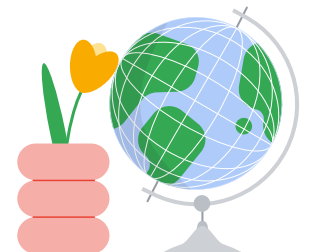
3

hours

Exam Duration

Testers will have 3 hours (180 minutes) to complete the exam.

The following pages include a labeled diagram of the exam features and sample test questions. For additional questions, please review our Educator Level 1 and Level 2 FAQs.



  Question 1/35

Multiple Choice Question - Please select 2

Time Remaining 02:59:08

- Identifies progress
- Instructions on question type
- Additional support
- Indicates # of required responses
- Remaining exam time

What two Google tools could students use when working on research projects? Question

- Google Scholar
- Google's Santa Tracker
- Google Trends
- Auto Draw

Answer choices

- RESET
- SKIP
- REVIEW LATER
- PREVIOUS
- NEXT

- Moves to the next question
- Moves to the previous question
- Adds to the 'Review' queue
- Skips the current question
- Clears your selections

Multiple Choice Question - Please select 1

How many participants can you have in a Google Meet with a Google Workspace for Education Fundamentals account?

- 50
- 100
- 150
- 250

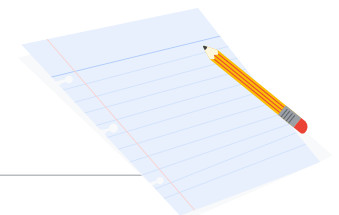
Questions that require 2 or more responses have a square

- [scribble]*
- [scribble]*
- [scribble]*
- [scribble]*

Things to note:

Number of required responses is designated in the top right 'Please select 1'

If a question requires you select 2 or more answer choices, you must select the number of specified questions in order to move on to the next question.



Drag & Drop Question

Use drag and drop to match the functionality to the Google tool.

Google Tool

Gmail

Drag your answer here

Google Maps

Drag your answer here

Google Calendar

Drag your answer here

Functionality

 Schedule a recurring meeting

 Send an email

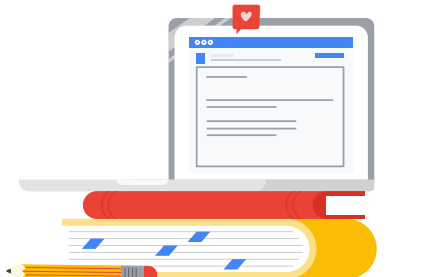
 Find directions

 Create templates to answer emails

 Create appointment slots

Things to note:

Make sure all answer choices are dragged over to the left column. There are no answer choices that should remain in the right column.







Drag & Drop Question

Identify the steps for creating a Google Classroom class by dragging the functions up and down.

Steps

Function



Step 1	 Click the '+' button
Step 2	 Create class
Step 3	 Go to classroom.google.com
Step 4	 Add class details

Click anywhere in the box to drag and drop

Things to note:

Move the answer choices by dragging and dropping them next to the corresponding step.

