

Retrieving Information Efficiently

Best Practices Series



The Google Ads API Developer Series



David Wihl

Developer Relations Engineer

Use cases

- Retrieving values of properties and metrics
- Reporting
- Local sync



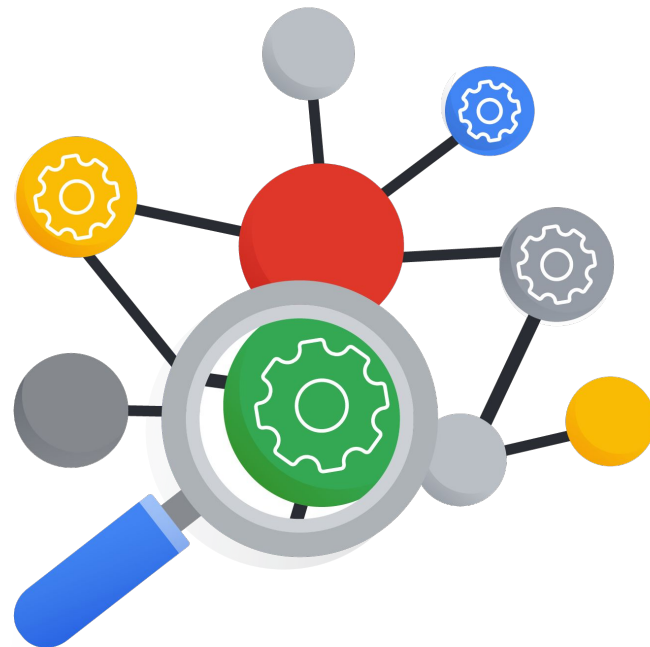
SearchStream vs. Search vs. Get

SearchStream

- Allows you to retrieve information for an unlimited rows with a single request.
- When to use SearchStream :
 - By default.
 - Especially for large downloads.
 - Except when you need Search...

Search

- Retrieves information one page at a time.
- **Always** set the [page size](#) to be 10,000 unless you are severely memory constrained.
- Client libraries handle pagination automatically
- Prior pages can be retrieved

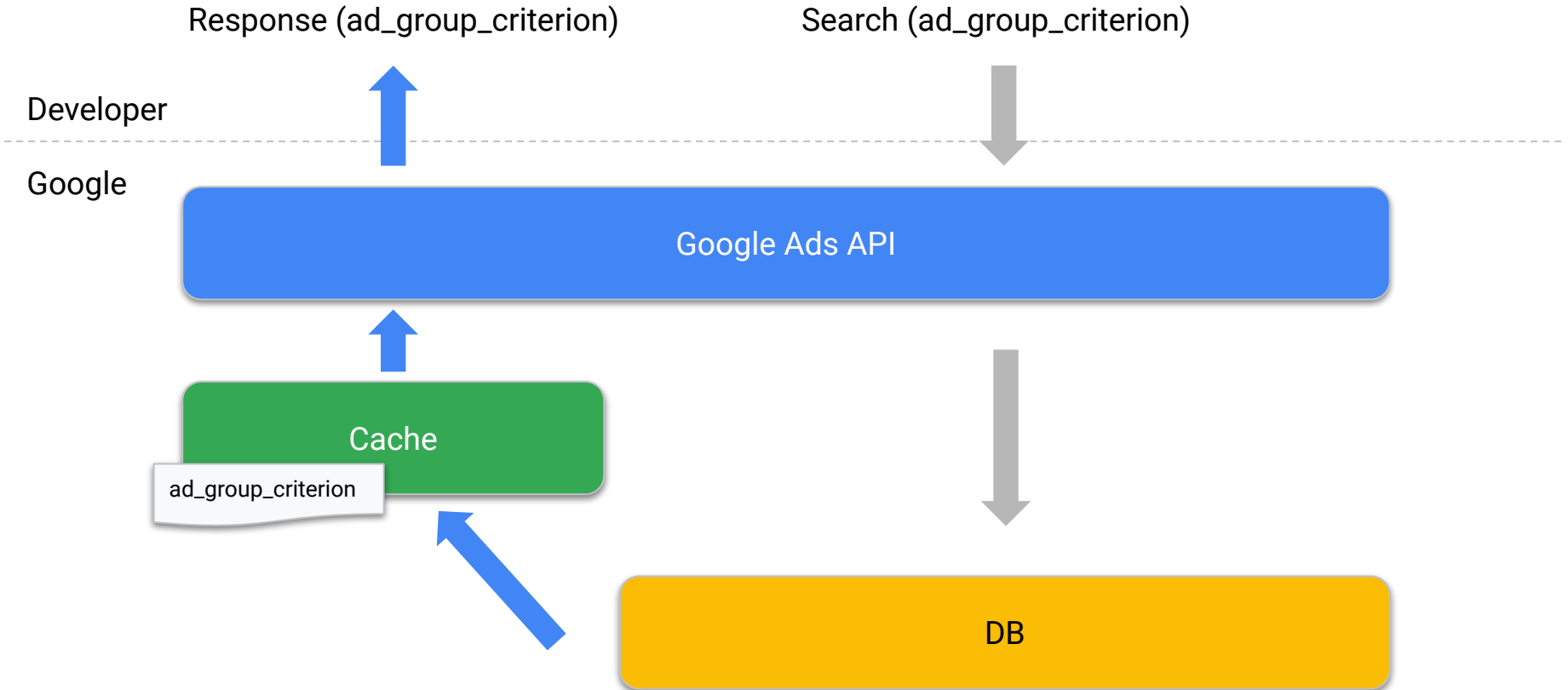


Common scenarios to use Search / paging

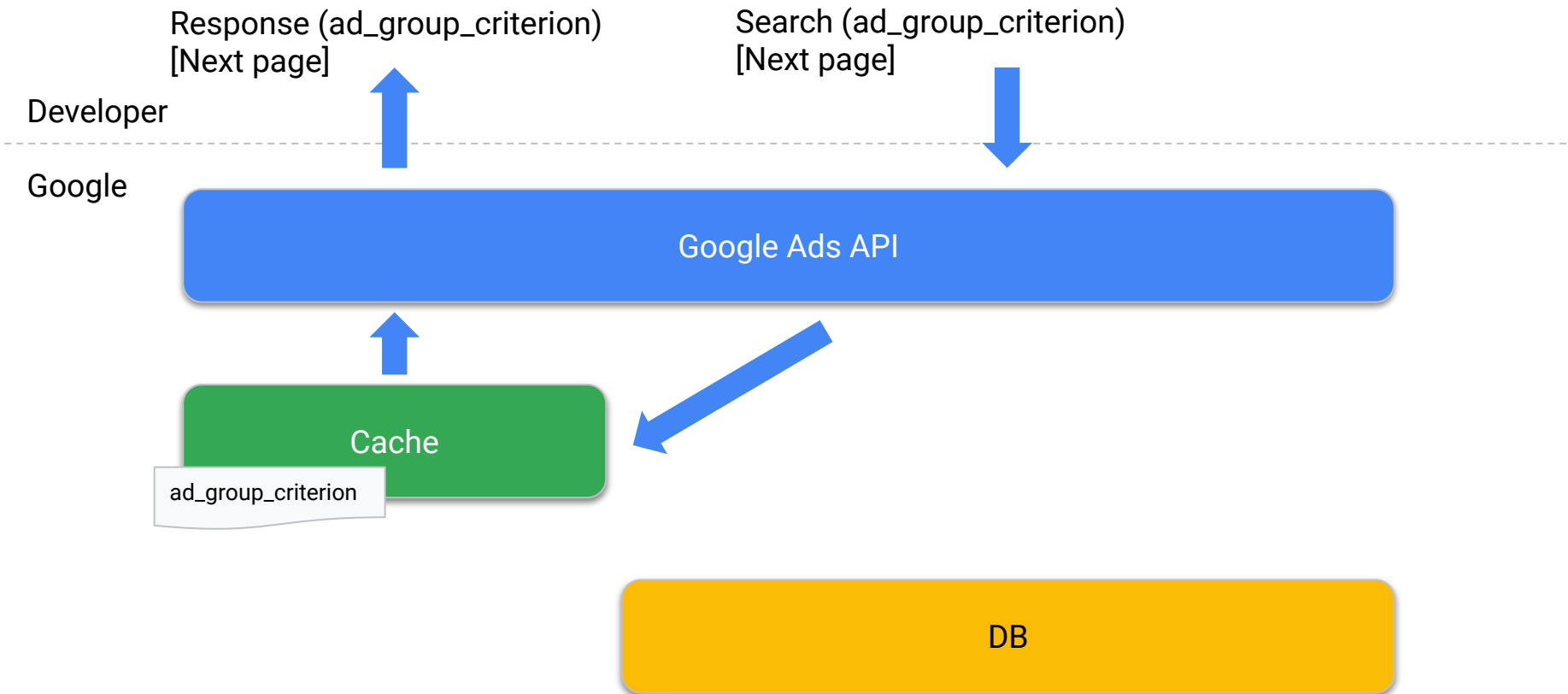
- **Unstable connection:** paging allows retries of specific pages
- **Need to go backward:** store the [next_page token](#).



Simplified Google Ads API Search architecture



Simplified Google Ads API architecture



* Note: page tokens currently expire after 2 hours (subject to change)

How to use Search to go backwards

- Store the first page of the result and the `next_page_token`
 - You must always store the first page because there is no “next page” token for it
- For each page, keep track of each `next_page_token*` (assuming `page_size=10_000`):

Request Number	Rows Returned	Next Page Token
1	1 - 10,000	<code>token="t2"</code>
2	10,001 - 20,000	<code>token="t3"</code>
3	20,001 - 30,000	<code>token="t4"....</code>

Example: using Search to go backwards

- Example: you are downloading row 25,000 (page 3) but need row 15,000 (page 2)
 1. Store `next_page_token` for "t4"
 2. Go back: `GAS.Search(next_page_token="t2")`
 3. Resume: `GAS.Search(next_page_token="t4")`

Request Number	Rows Returned	Next Page Token
1	1 - 10,000	<code>token="t2"</code>
2	10,001 - 20,000	<code>token="t3"</code>
3	20,001 - 30,000	<code>token="t4"....</code>

When to use Get

- **Only** for development / debugging purposes.
 - **Never in production.**

Three ways to retrieve information

	<u>GAS.SearchStream</u>	<u>GAS.Search</u>	<u><service>.Get</u>
Primary use	Most scenarios	Special circumstances	Debugging and testing only <small>(Limited to 1,000 operations per day)</small>
# of rows	All sizes	<u>Up to 10k rows</u> per page, unlimited pages	One row, one object
# of columns	Explicit in query	Explicit in query	All columns

Bottom line: to retrieve information,

use SearchStream by default.

Stay tuned for advanced sessions...

Thanks for watching

- We welcome your feedback at googleadsapi-support@google.com
- Check out the full Best Practices Series playlist for related content
- See more episodes on our [YouTube channel](#)

