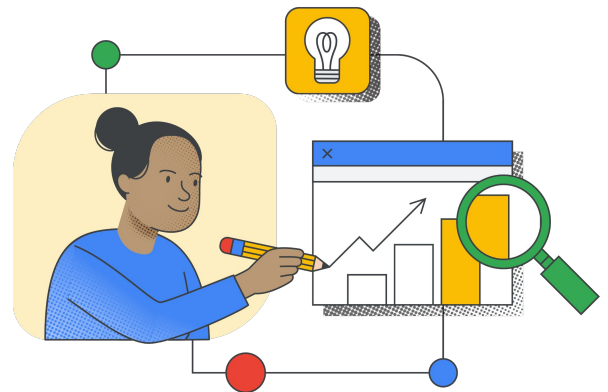


Power your personal potential

Google for Education adaptive learning technology helps amplify educators' impact and makes learning more personal with secure, scalable tools for all of your students.



Make each lesson more personal

Meet students where they are and encourage them on their learning journeys with tools that help inspire them to do their best.



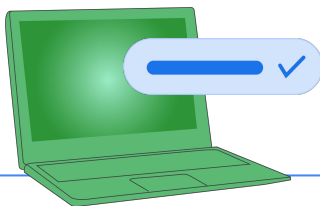
Amplify educator impact

Take instruction to the next level by giving educators technology that provides them with the time, tools, and insights to maximize their impact.



Scale secure learning tools to everyone

Reach your whole student body with tools that react to teacher and student needs, while keeping your data private.



Adaptive learning technology is built into popular Google tools for more impactful teaching and more individualized learning.



[Google Classroom](#)



[Google Lens](#)



[Read Along](#)



[Google Search](#)



[Chromebooks](#)

Find the right Google Workspace for Education edition for your classrooms.

Subscribe to the Teaching and Learning Upgrade or to Education Plus to give your school community capabilities like automating grading, accessing autosuggested educational content, creating interactive assignments, and running unlimited originality reports. [Compare editions](#)



[Learn more about Google for Education](#)

Elevate the education experience with adaptive learning technology.

Personal learning

- Boost student confidence with automated features that give students hints and motivation in tools like Read Along or practice sets in Classroom
- Inspire student expression with Screencast app on ChromeOS that enables them to narrate their own video reports
- Encourage a deeper understanding of topics by surfacing relevant videos from the web or enabling keyword searches within your recorded video library
- Use the power of Google Search to help students properly integrate external inspiration into their writing and avoid plagiarism with originality reports

Instructional impact

- Efficiently plan lessons with features that autosuggest quality web content for classes and enable you to easily customize assignments
- Record, trim, share, and view transcribed screencasts with the Screencast app
- Reduce your administrative workloads with autograding, real-time video uploading, and one-click sharing
- Access adaptive learning features that are seamlessly integrated in Google Classroom or ChromeOS
- Use practice sets to gain insights into student performance and a better understanding of gaps in student knowledge

Scaled support

- Ensure everyone gets the focused support they need by making secure, adaptive learning tools available to your entire school
- Deliver tools that enable individualized support so students can problem-solve independently while you work with others
- Give access to video creation tools and content that can be utilized by your entire school community – both in and out of the classroom
- Easily control your adaptive learning tools, data, and security settings in Google Workspace for Education and on Chromebooks from the Admin console



As a teacher, I appreciate the immediate feedback that the students receive after completing their work. I also love the ease of use for myself as well as the students; the creating tools for teachers and writing tools for students are very user friendly.”

Jennifer DeBoer

Third Grade Teacher
Madison Elementary School,
Blaine, MN

Google's approach to AI in education

The use of AI in education can raise important challenges. With our adaptive learning technology, we're committed to delivering your school EdTech tools that are built responsibly.

[Privacy](#)

Your privacy is protected by responsible data practices, and we stay up to date with evolving legislation.

[AI ethics](#)

We develop AI to be human centered, aiming to help students and teachers in their daily lives.

[Safety](#)

Our technology is built with multilayered safeguards and never stops protecting your school's digital safety.

