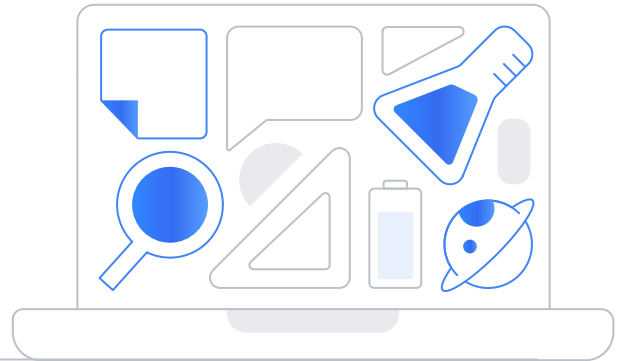


# Get started with Gemini

Digital resources to help support your education institution

Explore our range of guides, courses, and learning resources available at no cost.



## Trainings and certifications

### [Get Started with Google AI in K-12 Education](#)

Learn how to use Gemini and NotebookLM to save time and create captivating learning experiences.

### [Get Started with Google AI in Higher Education](#)

Discover how to use Gemini and NotebookLM to enhance research, streamline administration, and accelerate innovation.

### [Generative AI for Educators](#)

Transform your teaching with tips on how to use gen AI tools to save time, personalize instruction, and creatively enhance your lessons.

### [Gemini Academy](#)

Amplify your teaching with this in-person program that provides training on how to use gen AI safely and elevate your creativity and productivity with Gemini.

### [Prompting Essentials certification](#)

Get certified in how to prompt generative AI tools in five easy steps.

### [AI Essentials certification](#)

Learn how to get certified in using AI to speed up daily tasks, make more informed decisions, and more.

### [Become a Gemini Certified Educator](#)

Proof of AI mastery for lesson plans tailed for all ages and learning levels.

### [Become a Gemini Certified Faculty Member](#)

Master AI to streamline research, help with grading, and pioneer future-ready classrooms for the next generation.

### [Become a Gemini Certified Student \(Higher Ed\)](#)

For those 18+, show recruiters you're ready for anything - including the future.

### [Become a Gemini Certified Student \(K-12\)](#)

Level up your transcripts with a Google certificate designed for those ages 13-17.



## Guides

### [K-12 enablement toolkit for Gemini and NotebookLM](#)

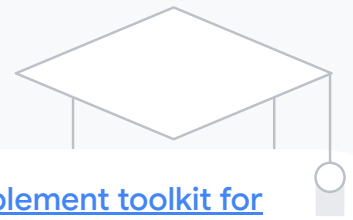
Find what you need to activate, inspire, and grow Gemini and NotebookLM use in your education community - all in one place.

### [100+ ways to use Gemini in K-12 education](#)

Explore how educators and students can use Gemini and NotebookLM with suggested prompts.



Try the [Gemini app](#) and [NotebookLM](#) today



## Guides continued

### [5 must-knows to get started with generative AI](#)

Check out this guide to help younger students understand what AI is, how it works, and how to use it safely and productively.

### [Get started with Gemini for college](#)

Empower students with this essential guide to Google AI for college.

### [A Guide to AI in Education](#)

Explore Google's approach to building AI for education.

### [Guardian's Guide to AI](#)

Equip parents and guardians with an overview of AI in education.

### [Gemini K-12 overview](#)

Learn how to transform how you teach, learn, and work with Gemini in K-12.

### [AI Literacy Hub](#)

Build AI knowledge and literacy with trainings and guides consolidated into a central hub.

### [Lesson plan for teaching responsible AI use](#)

Guide students on how to use AI ethically with resources that cover accuracy, bias, academic integrity, and responsible digital citizenship.

### [Youth AI literacy guide](#)

Educate students in grades 2–8 with foundational AI literacy.

### [Higher education enablement toolkit for Gemini and NotebookLM](#)

Find what you need to activate and deploy Gemini and NotebookLM across your higher ed institution, and access resources to inspire and grow your campus.

### [Gemini higher education overview](#)

Find out how to transform how you teach, learn, and work with Gemini in higher education.

### [Gems overview](#)

Learn how to use premade Gems or create your own.

### [Google NotebookLM overview](#)

Explore how to accelerate learning and knowledge sharing with AI grounded in your sources using NotebookLM.

### [50+ ways to use Gemini in higher education](#)

Help higher education faculty, researchers, administrators, leaders, and students discover how to use Gemini for Education and NotebookLM.

### [Google Workspace for Education: Higher education](#)

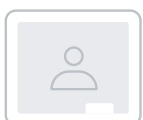
Discover Google's full-stack technology solution for higher education.

### [Google for Education AI offerings: free vs. paid comparison](#)

Empower your entire education community with generative AI tools designed to scale with your institution's needs.

### [Quickstart guide to Gemini and NotebookLM for education admins](#)

Get started with this simple guide to Gemini and NotebookLM for administrators.



Try the [Gemini app](#) and [NotebookLM](#) today



## Videos

### [Youth AI literacy](#)

Educate students with this foundational AI literacy video.

### [Teaching for Tomorrow](#)

Discover innovative teaching strategies with an emphasis on how AI tools are shaping the future of education.

### [Using Google Workspace with Gemini](#)

Explore popular ways students, educators, and staff are using Google Workspace with Gemini.



## Additional Resources

### [Gemini for Education webpage](#)

Visit this central hub for official Gemini for Education information, updates, and announcements.

### [Gemini Apps Help Center](#)

Head to this comprehensive online resource to find answers, troubleshoot issues, and learn more about Gemini Apps.

### [NotebookLM webpage](#)

Explore what you can do with NotebookLM and learn how it works on this page.

### [NotebookLM Help Center](#)

Find detailed instructions, FAQs, and support articles for NotebookLM.

### [Google AI Pro for Education webpage](#)

Get useful information on how Gemini is integrated across Google Workspace products.

### [Google Educator Community: Gemini Space](#)

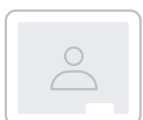
Explore a collaborative space for educators to connect, share ideas, and expand their instructional practices specifically around the use of Gemini.

### [K-12 AI use cases](#)

Uncover pre-built Gemini prompts to help you personalize instruction and streamline prep for K-12.

### [Higher education AI use cases](#)

Explore practical, ready-to-use AI prompt examples designed specifically for higher education.



Try the [Gemini app](#) and [NotebookLM](#) today