

Introduction

Logging & Monitoring



The Google Ads API Developer Miniseries



Laura Chevalier

Developer Relations Engineer

Overview

Logging

Most detailed source of information

Helpful for debugging and incident investigations

Monitoring

Higher level, user-friendly information

Helpful for understanding overall health of a system

Relationship between Logging & Monitoring

Logs are a primary, persistent source of information, useful for **debugging** and for providing **data for analyses**.

Monitoring can be built on top of logs, or it can capture real-time **signals of system health**.

Logging in your Google Ads Integration

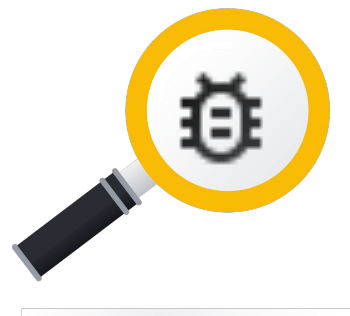
- Client libraries provide built-in **logging**
- Includes request and response information
- Additional logging and monitoring options are available



Benefits

Observability

- Gain visibility into errors and warnings
- Obtain request and response data to share with Google Ads API Support



Optimizing Performance

- Collect and analyze performance metrics
- Identify anomalies and send alerts
- Manage and prioritize resources



Improving User Experience

- Understand usage patterns
- Inform product and marketing decisions



Auditing and Security

- Maintain a history of authentication and usage



Implementation

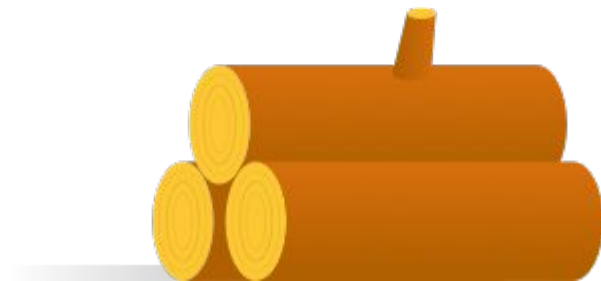
Implementing Logging and Monitoring

- How will application performance be measured?
- What events are important to track?
- What data is needed for debugging purposes?
- Where and how will log data be securely stored?



Built-in Logging

- Each client library comes with its own logging configuration
- Includes request and response details, but not performance metrics



Example: Logging in Python

```
logging:  
  version: 1  
  disable_existing_loggers: False  
  formatters:  
    default_fmt:  
      format: '[%(asctime)s - %(levelname)s] %(message).5000s'  
      datefmt: '%Y-%m-%d %H:%M:%S'  
  handlers:  
    default_handler:  
      class: logging.StreamHandler  
      formatter: default_fmt  
  loggers:  
    "":  
      handlers: [default_handler]  
      level: INFO
```

google_ads.yaml

Thanks for Watching!

- We welcome your feedback at googleadsapi-support@google.com.
- See more episodes on our [YouTube channel](#).