

 Gemini for Education

Google AI Educator Series

K12 Facilitator Guide



01.
Program Overview



02.
K12 Session Information



03.
Facilitation Best Practices



04.
Preparation Checklist

+ Ask Gemini





Program Overview

Welcome to your primary anchor for facilitating the [Google AI Educator Series \(GES\)](#) in partnership with [ISTE+ASCD](#). This document is designed to support you as you function in the role of facilitator. It serves as your first stop—a comprehensive roadmap that equips you with the narrative, frameworks, and technical strategies needed to successfully deliver this content.



Overview

Session Information

Best Practices

Checklist



Program Mission & Vision



Our goal is to move educators from foundational literacy to advanced instructional design and administrative efficiency.

From foundational literacy to advanced instructional design

The success of AI in education depends on educators being fully supported and trained. This initiative is not simply about learning a new tool; it is a transformational shift from information retrieval to instructional design.

Who is it for?

K12



Designed as "job-embedded" training. These 10–15 minute "LEGO bits" are meant to fit into the pockets of an educator's day—prep periods, lunch breaks, or brief staff meetings.

Higher Ed



30–45 minute sessions tailored for "Lunch and Learns" or professional development seminars. These sessions are anchored in high-stakes professional standards,



Series Structure & Release Cadence

The [Google AI Educator Series](#) is designed as a non-sequential, “snackable and stackable” curriculum to fit into busy educator schedules.



Overview

Session categories

1. **Foundational Understanding:** Entry points for AI and Gemini basics.
2. **Pedagogical Applications:** Discipline-specific and grade-level relevant use cases (PK-12 and HE).
3. **Administrative Applications:** Best practices for operational efficiency and professional growth.

Credential

After each session, learners will have the opportunity to take a quiz to earn a badge. The quiz will be housed on the [Google for Education Launchpad](#) and can be shared digitally (i.e. on LinkedIn pages). The competencies that align with the badges are:

- ➔ **Administrative Efficiency:** This competency focuses on optimizing administrative workflows and leveraging tools for tasks such as grant writing and data synthesis.
- ➔ **Assessing Student Learning:** This competency centers on creating fair, process-based grading systems and developing rubrics focused on the application of learned skills.
- ➔ **Designing Learning Experiences:** This competency focuses on pedagogical strategies like scaffolding and differentiation to tailor learning experiences and includes techniques for cognitive load reduction to improve student comprehension. This competency also connects educational content with practice scenarios through student simulations, integrating current industry trends to build essential workforce skills.
- ➔ **Getting Started:** This competency covers the core mechanics of generative AI, and Gemini specifically, including effective prompting techniques and understanding the essential ethical frameworks for its use.
- ➔ **Modeling Learning Strategies:** This competency involves the ability to synthesize information grounded in reliable sources and accurately verify claims and demonstrate appropriate use of AI.

Release cadence

Core session set



Launched
May 13, 2026

(Initial 15 K-12 and 16 HE sessions)

Monthly release



Starting
September 2, 2026

new content is released on the first Wednesday of every month

Duration



10–15 minutes
K-12 sessions

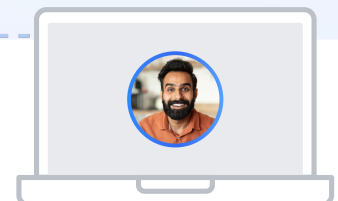


30–45 minutes
Higher Ed sessions

Session Information

Best Practices

Checklist





K12 Session Information

This guide provides the foundational best practices and information required to support engaging and effective facilitation. It serves as a comprehensive resource to help you lead educators through the series, ensuring that every session is purposeful and results in the development of high-quality instructional assets.

Overview

Session Information

Best Practices

Checklist

1. The GES Philosophy

Facilitation in this series is about shifting the educator's perspective from AI as a search engine to AI as a research partner, teaching assistant, or supportive tool that can support deeper learning and engagement strategies.



The "Heavy Lifting" Narrative: Frame Gemini as a tool that handles manual instructional burdens (scaffolding, differentiation, analogy generation) so educators can focus on student connection.



Educator-in-the-Lead: Explicitly model that the educator's expertise is crucial for any use of AI.

2. Standard Alignment: ISTE & ASCD

Each session is connected to an **ISTE Standard for Educators**. Note that connection in each session to reinforce the goal of supporting professional development.



The series supports the **Profile of an AI-Ready Graduate**, ensuring students develop essential AI competencies for the future workforce.



Throughout the sessions, educators are encouraged to think of ways that they can model AI usage to show students how to work with AI creatively, thoughtfully, and strategically.

3. Standard Session Flow

Section	Timing	Facilitator Goal
1. Introduction	2m	Hook: Identify a "bottleneck" (e.g., "I don't have time to differentiate reading levels").
2. Content Intro	2m	The Tool: Briefly introduce the specific feature (Canvas, Deep Research, etc.) solving that bottleneck.
3. The Demo	2m	Model: Run a "Live Demo". Show how to "talk back" to the AI to refine it.
4. Practice	5m	Sandbox: Educators use their own curriculum topic. Support iterative prompting.
5. Badging	4m	Closing: Participants complete the quiz on the Learning Center to earn their badge.

Facilitation Best Practices



Foundation & Credibility

Maintain intellectual honesty: Know what you know and what you don't. Avoid "bluffing" to maintain trust.

Contextual research: Always reference or advise adherence to institutional guidance, state or local government, and industry standards.

Educator in the lead: When referring to Gemini note it as a collaborator that relies on the expert.



Navigating the Room

Lead with inquiry: Use "curious questioning" when facing pushback or hostile behaviors to uncover the root concern.

Equitable engagement: Ensure that you are including multiple voices and perspectives. Be mindful of who you defer to or ask to speak to avoid creating a biased pattern.

Peer advocacy: Seek out feedback from participants and connect with other adopters.

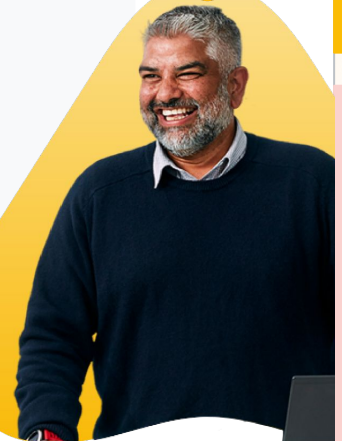
Sustained engagement: Follow up with any questions and commit to following up if necessary.



Active Demonstration

Live modeling: Demo where possible. Always prepare in the event there are technical challenges but taking educators through a process will resonate more than showing a slide.

Practice: A key element of this session is practice. Allow adequate time for educators to experiment and iterate during the practice session.

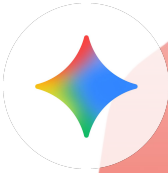


Overview

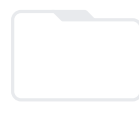
Session Information

Best Practices

Checklist



Preparation Checklist



Pre-Session



Materials

- **Slide deck:**
Always **make a new copy** of the GES slide deck before every session.
Thoroughly review the notes for each slide so you are comfortable with the narrative and activities.
Note: The speaker notes contain the script for each session; use presenter view with presenting to access the notes
- **Content refresh:**
Review Gemini features in advance so that you are more familiar with the content. We recommend becoming **Gemini Certified** to understand all of the components that the audience will encounter.

Credentialing

- **The value of badging:**
Emphasize that badges validate the learning and signal to their community that they have successfully completed the training.
- **Gemini certification:**
If educators have an interest in receiving their Gemini Certification, direct them to the course path.

Session Prep

- **Practice demos:**
Test every demo prompt 24 hours before the session.
- **Tab management:**
Pre-load gemini.google.com and notebooklm.google.com in separate tabs.
Note: Have your first prompt for each demo ready to run to avoid delays.
- **Pre-generate for flow:**
Pre-generate responses for time-intensive features like **Audio Overviews** in a hidden tab.
- **Model iteration:**
Show the audience how you "talk back" to Gemini to fix errors. This builds confidence in iteration.
- **The privacy mandate:**
Remind participants in **every session**: Never enter personally identifiable student information (PII).

Further Engagement



Post Session



- Encourage joining local **GEG (Google Educator Groups)** or ongoing support

Contact



- You are welcome to email ges-support@google.com with any questions or concerns regarding the content. This guide is updated regularly and will include pertinent changes to content or recommendations for activities.

*"We are excited to officially welcome you into the **Global Google Educator Group (Global GEG)** community. Think of this as our 'main campus.' It is a massive, worldwide hub where you can connect with colleagues from every corner of the globe to share lesson ideas and stay ahead of the latest Google updates."*

Resources & Links



- **Videos**
 - [Introducing the Google AI Educator Series \(long version\)](#)
 - [Discover the Google AI Educator Series \(short version\)](#)
- **Handouts**
 - [Content Overview & Links](#)
 - [K12 Facilitator Guide](#)
 - [Higher Ed Facilitator Guide](#)



Session Decks

[\[Public\] Google AI Educator Series Resources](#)



Section	Grades	Lessons
Foundational Understanding	All	Introduction to Gemini for Education
Foundational Understanding	All	Introduction to Google NotebookLM
Foundational Understanding	All	Introduction to Vibe Coding with Gemini
K12: Pedagogical Applications	PK-2	Adapt (level) materials to meet student needs
K12: Pedagogical Applications	PK-2	Evaluate resources and claims
K12: Pedagogical Applications	Grades 3-5	Create scaffolds to support reading comprehension
K12: Pedagogical Applications	Grades 3-5	Remixing to Gain Deeper Insights-K12
K12: Pedagogical Applications	Grades 6-8	Create a lesson plan and supporting materials
K12: Pedagogical Applications	Grades 6-8	Design assessments that capture student thinking
K12: Pedagogical Applications	Grades 9-12	Build student inquiry skills
K12: Pedagogical Applications	Grades 9-12	Design problem solving scenarios that encourage critical thinking
K12: Administrative Applications	N/A	Draft parent communications
K12: Administrative Applications	N/A	Turn benchmark data into instructional strategies
K12: Administrative Applications	N/A	Build just-in-time coaching

Overview

Session Information

Best Practices

Checklist

 Gemini for Education

Thank you



goo.gle/GES-FG

+ Ask Gemini

