



Engage, assess, and save time with Google Forms

Explore how Forms can help drive classroom engagement and create new learning experiences while saving teachers' time – at no cost.



Simplify student assessments

Easily administer quizzes and exams that are simple and intuitive to create, respond to, and analyze – and use features that make grading fast and easy.



Easily gather info to help improve learning

Gain valuable insights from students and other people in your school community. Get time back to focus on teaching, and increase instructional impact by using form responses to focus upcoming lessons on what students need the most.

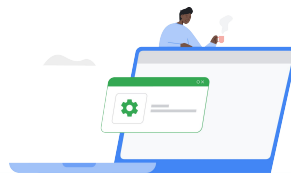


Unlock new learning opportunities

Offer creative homework assignments and engaging class activities by using Forms in various ways, and take capabilities and uses further with a large collection of third-party add-ons.

Explore the different ways you can use Forms in your class

Get inspired by all the ways educators are using Forms to create new learning experiences:



- Quizzes
- Class surveys
- Permission slips
- Parent feedback
- Sign-up sheets
- Student and class assessments
- Work submissions
- Quick check-ins
- Escape rooms
- Opinion collection

[→ Get Started](#)



Additional capabilities with add-ons:

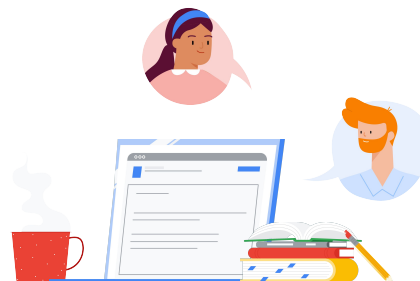
- [Sign-up forms](#)
- [Sign-out forms](#)
- [Office hour coordination](#)
- [Lesson plans](#)
- [Math equations](#)

[→ Explore add-ons](#)





GOOGLE FORMS



Set up, share, and score quizzes faster

- [Create a quiz](#) in Google Forms to turn on quiz features
- Enable locked mode to promote integrity and ensure students don't leave the form during a quiz (only available for managed Chromebooks)
- Provide correct answers to automate grading
- Choose when grades are released and whether students can see correct answers, missed questions, or point values
- Give students feedback on their answers with texts, links, or videos
- Easily import quiz scores into Classroom
- Save time by grading quizzes in batches or by question instead of by student
- Develop a question bank to create quizzes fast
- View form responses in Google Sheets to gain more insights

[→ Learn more](#)



Collect and build actionable insights

- Easily add forms as assignments or quizzes in Classroom
- Gain insights fast by automating how responses are organized and visualized
- See responses in real time
- Do more with your data by viewing it in Sheets
- Student responses are automatically saved as drafts for up to 30 days, meaning they won't have to start over if they are working on long assignments and can't complete a form or quiz in one sitting, are working across devices, or lose internet access



Create and customize all types of forms with ease

- Work with the same intuitive interface you see in other Google Workspace for Education services
- Choose from a number of helpful templates
- Co-create forms with other teachers
- Customize your forms by picking the types of questions, moving modules, or changing the theme
- Use any device to create and edit forms or analyze responses
- Eliminate the need to print and store paper records
- Get automatic updates through Chrome management and Google Workspace



Keep data protected and private

Google Forms is built with the same industry-leading security as all Google for Education products and services. Schools own their data - it's our responsibility to keep it private and secure.

[→ Learn more](#)

Google Workspace
for Education

© 2021 Google LLC 1600 Amphitheatre Parkway, Mountain View, CA 94043.



Get started with Google Forms
g.co/edu/forms-guide