

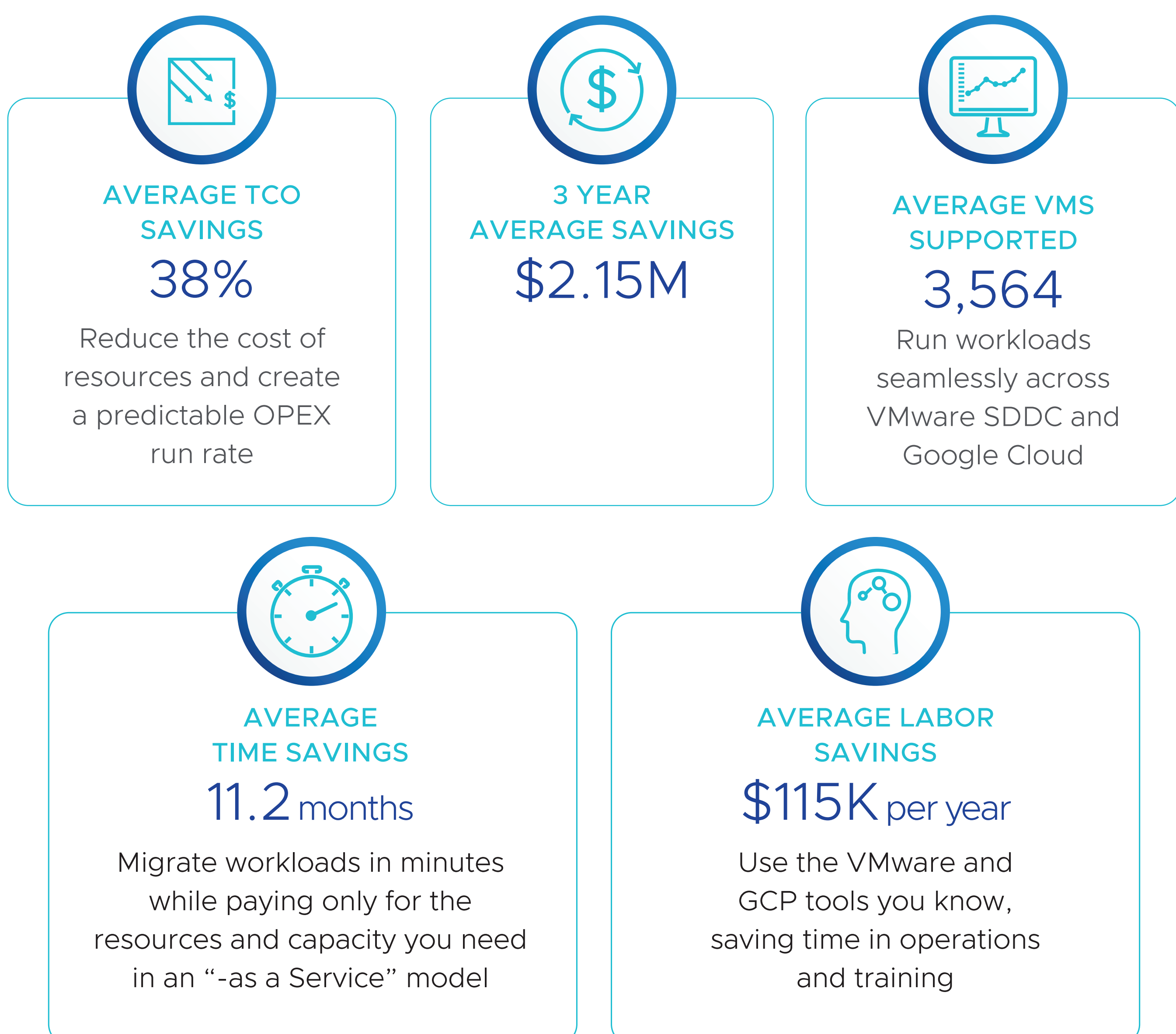
Save Time, Save Money with Google Cloud VMware Engine



Google Cloud VMware Engine is a critical step in “cloud-first” and digital transformation with Google Cloud.

Google Cloud VMware Engine is the only solution available for migrating your datacenter workloads to Google Cloud Platform quickly and securely. Google Cloud VMware Engine goes beyond an infrastructure “lift and shift”.

Google Cloud VMware Engine Drives Profitable Outcomes



Google Cloud VMware Engine Accelerates Time to Cloud Value

Google Cloud VMware Engine, developed jointly by Google and VMware, is validated for interoperability between the VMware SDDC stack and Google Cloud.



Fast Cloud Migration

Add cloud nodes and capacity in as little as 30 minutes



Secured Solution – at Rest, in Transit

Always-on cybersecurity protecting data, information, applications, devices



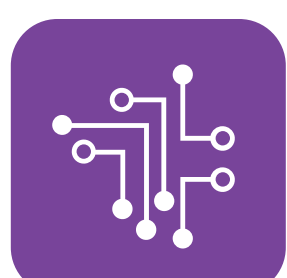
Operational Control

Improve productivity and efficiency with cloud-powered back-end processes



Simple Integration

Fully integrated solution with the Google Cloud Console



High-Speed Cloud Networking

99.99% SLA for network uptime, availability



Sustainability

Reduce carbon footprint by retiring physical datacenters

Google Cloud VMware Engine: The Best of Google and VMware

Google Cloud VMware Engine is your gateway to IT transformation with Google and VMware.

- Access the Best of Google**
The technology powering Google native platforms with 1 Billion+ users globally
- Leverage Google Cloud Infrastructure**
Extensive capabilities across AI/ML, compute, network, storage, databases, apps
- Integrate VMware Solutions with Google Cloud**
VDI with Horizon™, vRealize Cloud Management™, vRealize Network Insight™, VMware Site Recovery™, and more



Start Your Cloud Journey

Save time, save money in your digital transformation.

Read more at cloud.google.com/vmware-engine

Sources: 2022 TCO Assessment Studies over 18-Month Horizon, VMware Cloud Economics Team and 2022 Google Cloud Internal Customer Studies

Note: Figures are weighted averages and are not reflective of every cloud migration instance